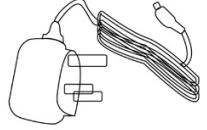




Ignite Signal Booster User Guide Rev 1.3

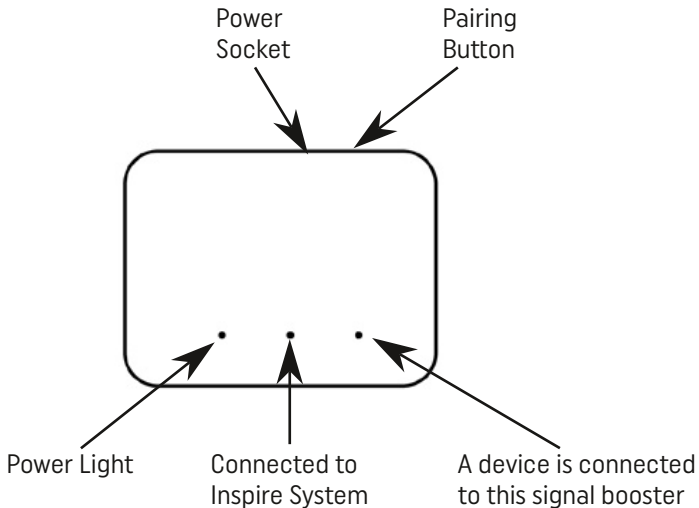
What's in the box

- 1 x Ignite Signal Booster
- 1 x Power Supply



Introduction

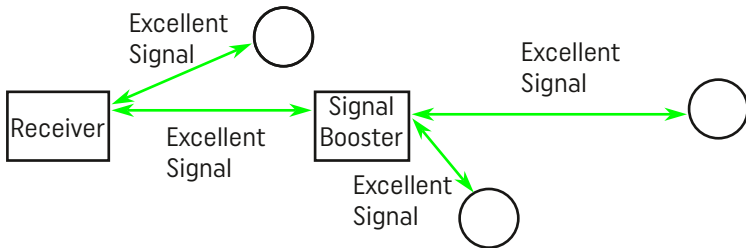
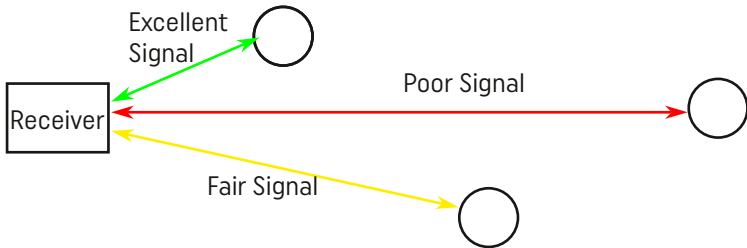
An Ignite Signal Booster is used when the Ignite components have to be positioned in such a way that they are not within radio range of each other, or the radio signal strength is poor. This may happen if the Ignite system is installed in a large house or a house with thick walls or a building where components are located over several floors.



Positioning

The best place for the repeater would be halfway between the unit(s) which are struggling to communicate and the powered device (Receiver or Wired Thermostat) Please note that messages cannot "Hop" between Battery operated devices (Wireless Thermostats and Smart Sensors)

See the diagram below.



Also note that the signal degrades mainly as it passes through objects, rather than distance. So "Halfway" may not be halfway distance wise. Eg if The Thermostat to Receiver signal had to pass through 4 walls, the repeater should most likely be placed so that there are TWO walls between Receiver and Signal booster, and TWO walls between Thermostat and Signal Booster.



In the above example, the best place for the Signal Booster would be point A, not point B.

Pairing

Before the Ignite Signal Booster can be used, it must be paired to the Ignite System. Ensure that the Ignite Signal booster is showing a green power light.

Ignite Touch / LITE / Wireless

Long press BOTH buttons on the Receiver until '1 and WiFi' lights flash.

Using the LEFT button, cycle through the menu until 'CH' flashes.

Press the RIGHT button, 'CH' will rapidly flash.

Ignite 4 channel (Touch / LITE / Wireless)

Long press BOTH buttons on the Receiver until '1 and WiFi' lights flash slowly.

Using the LEFT button, cycle through the menu until '1' flashes on its own.

Press the RIGHT button, '1' will now rapidly flash.

Ignite Wired

Press and hold 'CH MODE' and 'BOOST CH' keys together on the Room Thermostat until C5 is displayed.

Ignite Signal Booster

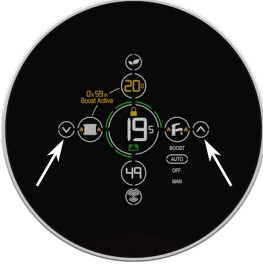
Press the pairing button, the middle light will start to flash green. Once paired, the light will show solid green to show that it is connected to the Ignite System.

If the Ignite Signal Booster is being added to an existing system, and the system is currently all connected, but with a poor signal strength, the device with a poor signal will not immediately reconnect via the repeater. Once the connection is lost, it will reconnect to the best signal path.

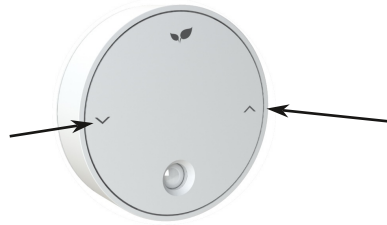
If you wish to reconnect your device through the Ignite Signal Booster straight away, simply reset the device in question. This will then cause it to reconnect to the best available device.

Resetting Units

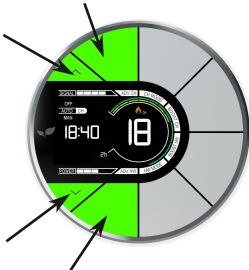
If you wish to reset the units, please follow the instructions below. Or take the batteries out of a device, wait for 30 seconds to allow any residual power to fully dissipate, and then put the batteries back in again.



To reset the Ignite Touch Thermostat, press and hold the up and down arrows for 30 seconds. First 'C1' will display, keep your fingers held in the same position until the regular screen returns.



To reset the Ignite Smart Sensor, press and hold the two buttons for 5 seconds.



To reset the Ignite Wired or Wireless Thermostat, press and hold the four highlighted buttons for 5 seconds.